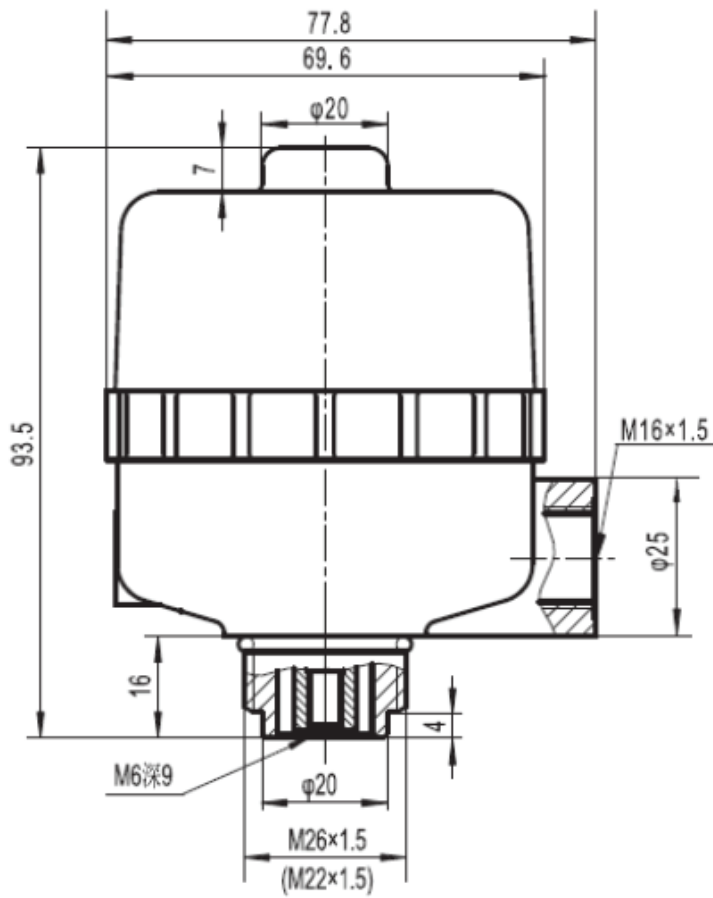


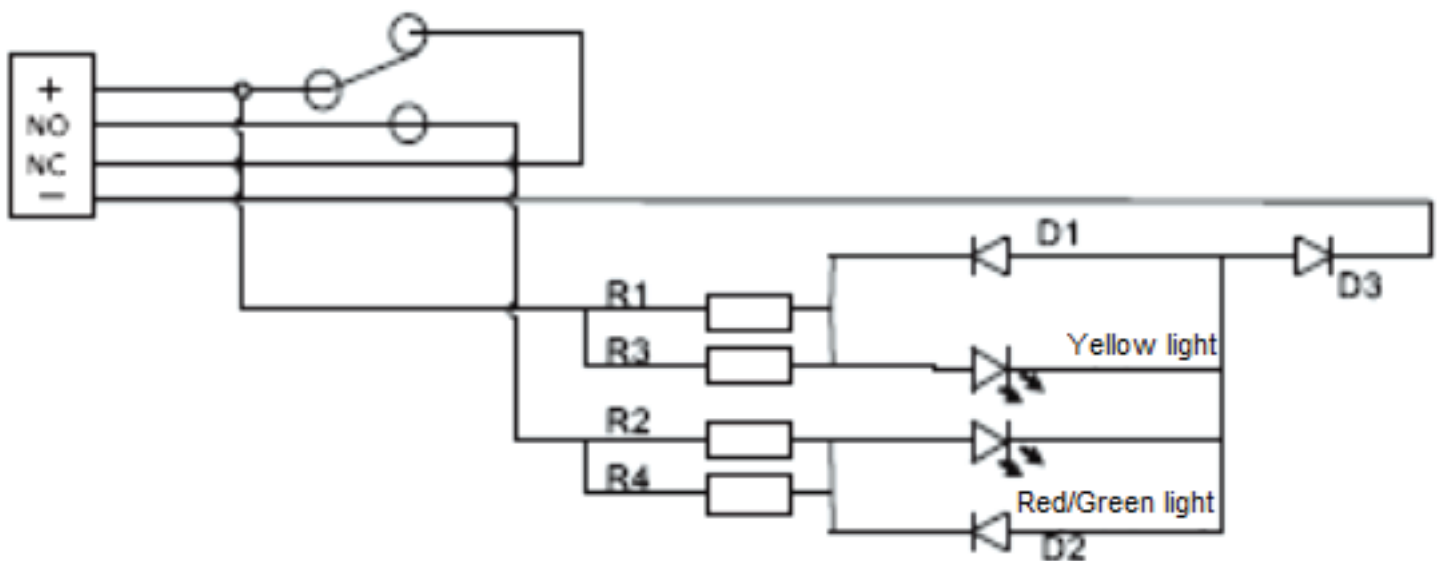
- Direct return valve positioner can be rotated 360 ° directly installed on the valve, the valve position and its status can be reported to the upper system by Electric remote report. The built-in LED light emits optical position feedback.

Power supply	-20°C~50°C
Installation	M26*1.5;M22*1.5
Cable interface	M16*1.5
Stroke control range	10-30MM
Explosion proof	Exia II CT5Ga
Technical parameters ( Exia II CT5Ga )	$U_i=36V$ $I_i=100A$ $P_i=0.98W$ $C_i=0\mu F$ $L_i=0mH$

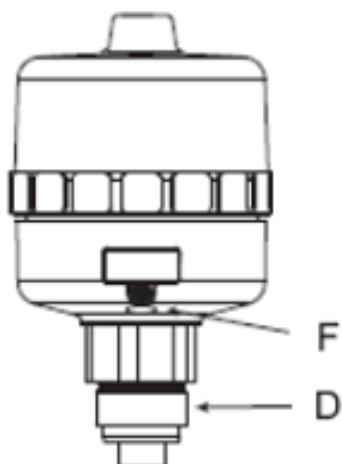
## Dimension



## Connection type



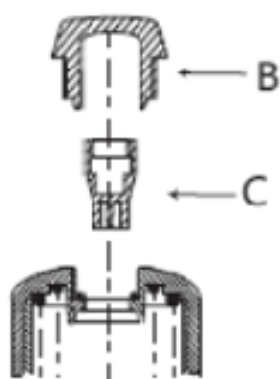
## Installation



Loosen the screw F with a hexagonal wrench and remove the drive rod D.

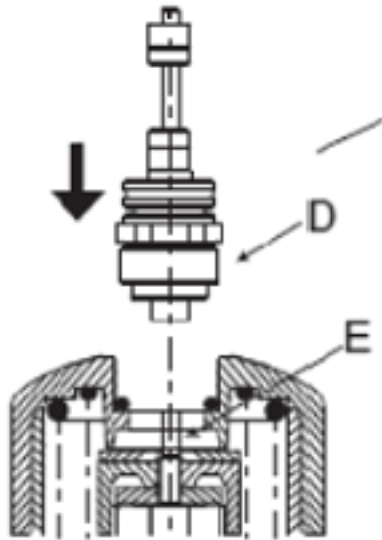


Check that the seal on the transmission rod is installed and in good condition and replace if necessary

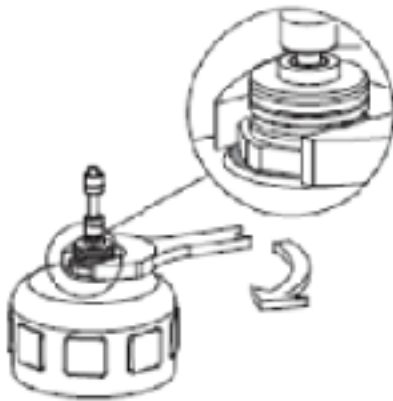


Unscrew the clear cap B on the drive and indicate the C on the drive lever

## Installation



Place drive bar D into the drive and screw threaded lock A onto drive lever E.

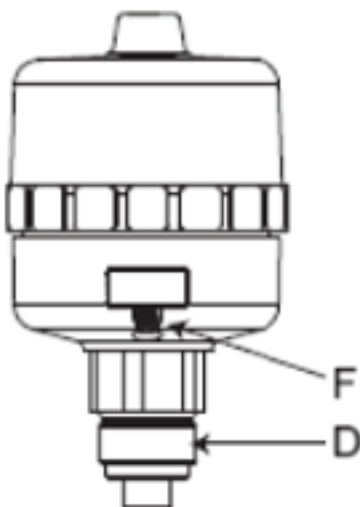


Use a wrench to tighten the drive rod to the top of the drive

## Installation

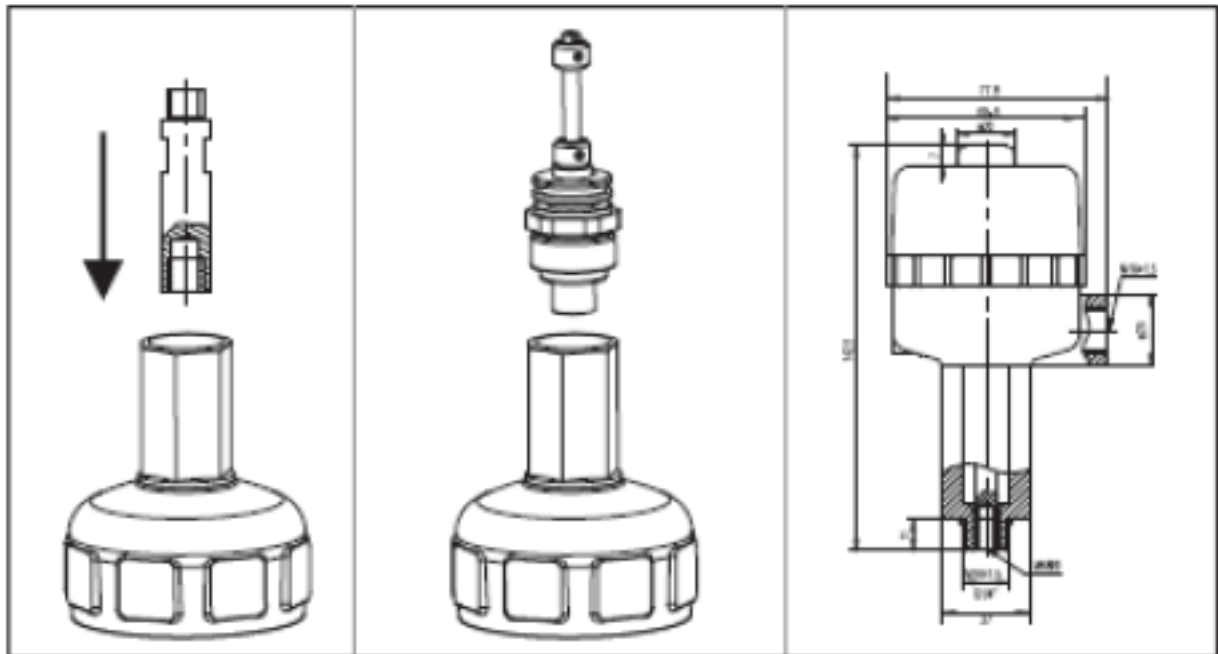


**Tighten the drive rod and driver rod with a driver**



**Install the return sensor housing to the drive rod D, rotate the sensor housing, set the direction of the cable glands, and ensure that the electric shock signal is normal. Use the Allen wrench to tighten the fixing screw F**

## 1/4, M16\*1.5 Conversion sleeve installation



**Sealing Systems**

19 Perissou St. 14 343 N.Chalkidona

Athens Greece

Tel. 030 - 2108312002

e-mail: [info@sealingsystems.gr](mailto:info@sealingsystems.gr)

[www.sealingsystems.gr](http://www.sealingsystems.gr)